

## BASIC COSTUME FOR CRY HAVOC

Patterns are for a simple hood and Tunic that should be easy to make even if you're a novice at costume making. I recommend making two tunics: an under tunic in linen or cotton and a slightly bigger over tunic in wool or similar. The hood can be made from soft wool fabric, or it can be lined with cotton or linen for comfort.

If you're not confident make a rough version from scrap or cheap fabric first to see if the garments fit.

### TUNIC

- 1) Once you have your fabric and some basic measurements cut out the pieces – Dimension A is your wrist measurement plus several inches for comfort, Dimension B is around your armpit and shoulder plus a generous amount for comfort.
- 2) Sew the pieces together as indicated remembering to leave a slot for your head
- 3) Hem all the raw edges

### HOOD

- 1) Copy the pattern using the dimensions indicated – cut two and place them one on top of the other so the edges line up
- 2) Sew all the edges except the edge marked FACE and the edge marked SHOULDER CAPE
- 3) Hem all the raw edges

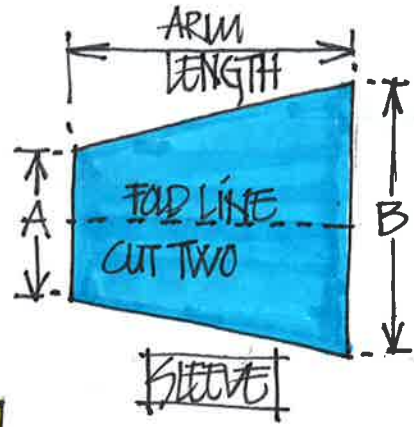
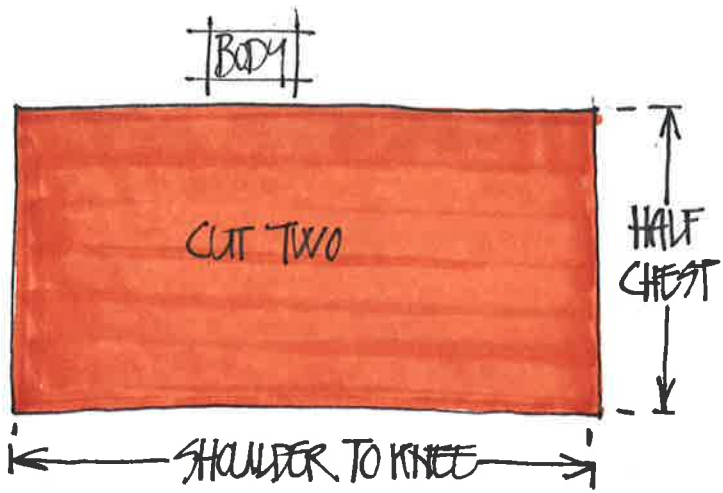
### LEGS

The legs can be left bare or you could make simple linen gaiters as sported by the medieval chap in the picture – these are just rectangles of fabric wrapped around the lower leg and tied at the knee and ankle with cloth strips.



### ACCESSORIES

Once you've decided on your footwear, a plain woollen blanket is always handy to wrap around you in the evenings if it gets cold, but other than that add a suitable thin leather belt and a purse and you're good to go.



ARMHOLE GUSSET 3 INCHES SQUARE  
CUT TWO

TUNIC

